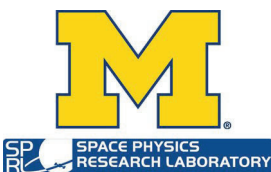


# CYCLONE GLOBAL NAVIGATION SATELLITE SYSTEM (CYGNSS)



|  |                      |                         |
|--|----------------------|-------------------------|
| <b>Algorithm Theoretical Basis<br/>Document<br/>Level 3 Gridded<br/>Wind Speed</b> | <b>UM Doc. No.</b>   | <b>148-0319</b>         |
|  | <b>SwRI Doc. No.</b> | <b>N/A</b>              |
|  | <b>Revision</b>      | <b>Rev 3</b>            |
|  | <b>Date</b>          | <b>20 November 2023</b> |
|  | <b>Contract</b>      | <b>NNL13AQ00C</b>       |

Algorithm Theoretical Basis Documents (ATBDs) provide the physical and mathematical descriptions of the algorithms used in the generation of science data products. The ATBDs include a description of variance and uncertainty estimates and considerations of calibration and validation, exception control and diagnostics. Internal and external data flows are also described.



# CYCLONE GLOBAL NAVIGATION SATELLITE SYSTEM (CYGNSS)

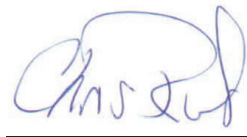


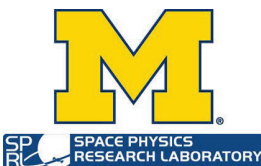
|  |                      |                         |
|--|----------------------|-------------------------|
| <b>Algorithm Theoretical Basis<br/>Document<br/>Level 3 Gridded<br/>Wind Speed</b> | <b>UM Doc. No.</b>   | <b>148-0319</b>         |
|  | <b>SwRI Doc. No.</b> | <b>N/A</b>              |
|  | <b>Revision</b>      | <b>Rev 3</b>            |
|  | <b>Date</b>          | <b>20 November 2023</b> |
|  | <b>Contract</b>      | <b>NNL13AQ00C</b>       |

Prepared by: Chris Ruf, Anthony Russel 11/20/23

Approved by:  Date: 11/20/2023  
 Darren McKague, CYGNSS UM Project Manager

Approved by:  Date: 11/20/2023  
 Anthony Russel, CYGNSS SOC Manager

Approved by:  Date: 11/20/23  
 Chris Ruf, CYGNSS Principal Investigator





---

### REVISION NOTICE

| Document Revision History |                  |   |
|---------------------------|------------------|---|
| Revision                  | Date             | Changes   |
| INITIAL RELEASE           | 8 December 2015  | n/a   |
| Rev 1                     | 20 August 2018   | Include L3 gridded products corresponding to each of these L2 wind speed products: 1) Fully developed seas minimum variance; 2) Young seas with limited fetch from DDMA L1 observable. Include L3 gridded product corresponding to the L2 mean squared slope product. |
| Rev 2                     | 13 October 2021  | Add appendix with data dictionary   |
| Rev 3                     | 20 November 2023 | Adding Range Corrected Gain (RCG) data field  |



---

## Table of Contents

|                                      |   |
|--------------------------------------|---|
| 1. Summary .....                     | 1 |
| 2. Introduction and Background ..... | 2 |
| 3. Algorithm Overview .....          | 5 |
| 4. References .....                  | 7 |
| Appendix. Data Dictionary .....      | 8 |



## 1. Summary

This document describes the algorithm and data processing implementation used to produce CYGNSS Level 3 gridded wind speed science data products. The algorithm uses as its input the Level 2 wind speed science data products, which provide wind speed values at the time and location at which the measurements were made (i.e. in sensor-specific latitude, longitude and time coordinates) for each of the eight observatories in the CYGNSS constellation and for each of the four bistatic radar channels on each observatory. The Level 3 gridded product combines all  $8 \times 4 = 32$  wind speed measurements made by the CYGNSS constellation each second, sorts them into a uniform (latitude, longitude, time) grid, and reports certain statistics of the samples in each bin (e.g. number, mean value, ...), together with a compilation of the quality flags set for each of the samples in the bin. An L3 product is produced for the following products:

- 1) Fully developed seas (FDS) minimum variance wind speed
- 2) Mean squared slope (MSS)



## 2. Introduction and Background

### 2.1. The CYGNSS mission

The CYGNSS constellation is comprised of 8 observatories, evenly spaced about a common orbit plane at 510 km altitude and 35° inclination angle. Each observatory contains a Delay Doppler Mapping Instrument (DDMI) which consists of a multi-channel GNSS-R receiver, a low gain zenith antenna for reception of the direct signals, and two high gain nadir antennas for reception of the surface scattered signals (Ruf *et al.*, 2015). There are typically many specular reflections from the surface available at any given time due to the large number of GPS transmitting satellites. Each DDMI selects the four specular reflections located in the highest sensitivity region of its nadir antenna pattern and simultaneously computes DDMs centered on each of them. Individual DDM integration times last one second and wind speeds are derived from measurements over a 25x25 km<sup>2</sup> region centered on the specular point (Clarizia, 2015). This results in a total of 32 wind measurements per second by the full constellation. CYGNSS spatial sampling consists of 32 simultaneous single pixel “swaths” that are 25 km wide and, typically, 100s of km long, as the specular points move across the surface due to orbital motion by CYGNSS and the GPS satellites. Temporal sampling occurs randomly due to the asynchronous nature of the CYGNSS and GPS satellite orbits. As a result, the CYGNSS revisit time is best described by its probability distribution. The distribution, shown in Fig 1, is derived empirically using a mission simulator to determine the time and location of each sample within the ±38° latitude coverage zone and then examining the time difference between samples at the same location.

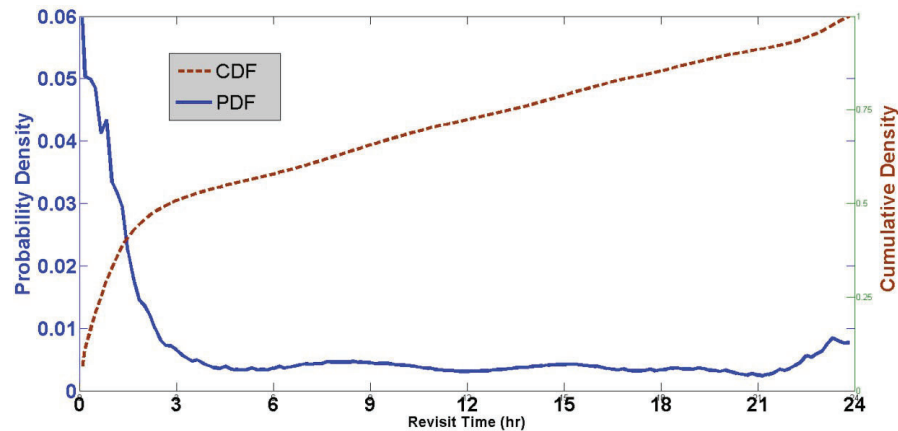


Fig. 1. Temporal sampling is characterized by the probability and cumulative density functions of revisit time. The median and mean revisit times are, respectively, 2.8 and 7.2 hours.

The empirical distribution features a high probability of very short revisit times (e.g. resulting from sequential samples by trailing satellites spaced tens of minutes apart) and a long, tapering “tail” at higher revisit times. Its median value is 2.8 hours and the mean revisit time is 7.2 hours.

CYGNSS combines the all-weather performance of GPS based bistatic scatterometry with the spatial and temporal sampling properties of a constellation of observatories. The GPS frequency of operation enables the instrument to make surface scattering observations through most precipitating conditions. This provides the ability to measure the ocean surface winds with high temporal resolution and spatial coverage under all precipitating conditions, up to and including those experienced in the hurricane eyewall. The 8 microsattellites are launched on a single Deployment Module that is attached to a NASA government furnished equipment Pegasus launch vehicle (Ruf *et al.*, 2013; Ruf *et al.*, 2016).

## 2.2. Science Goals, Objectives and Requirements

The CYGNSS goal is to understand the coupling between ocean surface properties, moist atmospheric thermodynamics, radiation, and convective dynamics in the inner core of TCs. The goal of CYGNSS directly supports the NASA strategic objective to enable improved predictive capability for weather and extreme weather events. Near-surface winds are major contributors to and indicators of momentum and energy fluxes at the air/sea interface. Understanding the coupling between the surface winds and the moist atmosphere within the TC inner core is key to properly modeling and forecasting its genesis and intensification. Of particular interest is the lack of significant improvement in storm intensity forecasts over the past two decades, relative to forecasts of storm track. Advances in track forecast have resulted in large part from the improvements that have been made in observations and modeling of the mesoscale and synoptic environment surrounding a TC. The CYGNSS team hypothesizes that the lack of an accompanying improvement in intensity forecasting is largely due to a lack of observations and proper modeling of the TC inner core. The inadequacy in observations results from two causes:

- Much of the inner core ocean surface is obscured from conventional remote sensing



instruments by intense precipitation in the eye wall and inner rain bands.

- The rapidly evolving genesis and intensification stages of the TC life cycle are poorly sampled by conventional polar-orbiting, wide-swath imagers.

The CYGNSS science goals are enabled by meeting the following mission objectives.

- Measure ocean surface wind speed in most naturally occurring precipitating conditions, including those experienced in the tropical cyclone eyewall
- Measure ocean surface wind speed in the tropical cyclone inner core with sufficient frequency to resolve genesis and rapid intensification.

The CYGNSS baseline science requirements are:

- 1) The baseline science mission shall provide estimates of ocean surface wind speed over a dynamic range of 3 to 70 m/s as determined by a spatially averaged wind field with resolution of 5x5 km.
- 2) The baseline science mission shall provide estimates of ocean surface wind speed during precipitation rates up through 100 millimeters per hour as determined by a spatially averaged rain field with resolution of 5x5 km.
- 3) The baseline science mission shall retrieve ocean surface wind speed with a retrieval uncertainty of 2 m/s or 10%, whichever is greater, with a spatial resolution of 25x25 km.
- 4) The baseline science mission shall collect space-based measurements of ocean surface wind speed at all times during the science mission with the following temporal and spatial sampling: 1) temporal sampling better than 12 hour mean revisit time; and 2) spatial sampling 70% of all storm tracks between 35 degrees north and 35 degrees south latitude to be sampled within 24 hours.
- 5) The CYGNSS project shall conduct a calibration and validation program to verify data delivered meets the requirements within individual wind speed bins above and below 20 m/s.
- 6) Support the operational hurricane forecast community assessment of CYGNSS data in retrospective studies of new data sources.





### 3. Algorithm Overview

#### 3.1. Algorithm Objectives

The objective of this algorithm is to produce gridded wind speed and MSS science data products which are uniformly sampled in latitude, longitude and time. This Level 3 product is generated from the Level 2 FDS wind speed and MSS samples produced by the constellation of observatories. In addition to a best estimate of the mean ocean surface wind speed and MSS within any particular bin, the algorithm also produces statistics of the wind speed and MSS which are derived from the population of samples of the Level 2 samples made by the constellation within that bin. A compilation of the quality flags associated with the population of individual Level 2 samples is also produced.

#### 3.2. Input Data Description

The input data required by this algorithm are listed here.

3.2.1. The wind speed and MSS data products produced by the Level 2 wind speed algorithm (Clarizia, 2015):

- The FDS Minimum Variance (MV) wind speed estimate
- The uncertainty in the FDS MV wind speed estimate
- The range corrected gain (RCG) estimate for the FDS MV wind speed
- The MSS estimate
- The uncertainty in the MSS estimate
- The range corrected gain (RCG) estimate for the MSS

3.2.2. The quality flags produced by the Level 2 wind speed and MSS algorithms are used to select which data samples are included in the gridded product. All L2 samples that are fatally flagged are not included. All L2 samples with non-fatal flags set, or with no quality flags set (i.e. no potential problems detected) are used.

#### 3.3. Algorithm Production Overview

The binning algorithm produces a minimum variance estimate of the mean wind speed, MSS, or RCG in the bin over the spatial and temporal intervals specified by the bin's boundaries. This is done using an inverse-variance weighted average of all L2 samples that were made within the bin. Specifically, for bin boundaries  $Lat_{min}$ ,  $Lat_{max}$ ,  $Lon_{min}$ ,  $Lon_{max}$ ,  $T_{min}$  and  $T_{max}$ , let  $S$  be the set of all L2 samples of the wind speed that do not have either of their fatal quality flags set and which satisfy the following conditions

$$S = \{Sample_i \mid Lat_{min} \leq Lat_i < Lat_{max}; Lon_{min} \leq Lon_i < Lon_{max}; T_{min} \leq T_i < T_{max}\} \quad (1)$$

where the  $i^{th}$  sample has bin coordinates  $(Lat_i, Lon_i, T_i)$ . Sort all L2 wind speed samples, together



with their uncertainties, that are in  $\mathcal{S}$ . The uncertainties are the estimated standard deviations of the wind speed estimates. The Level 3 wind speed estimate for that bin is given by

$$u_{L3}(\mathcal{S}) = \frac{\sum_{i \in \mathcal{S}} u_i \sigma_i^{-2}}{\sum_{i \in \mathcal{S}} \sigma_i^{-2}} \quad (2)$$

where  $u_i$  is the  $i^{\text{th}}$  L2 minimum variance wind speed in  $\mathcal{S}$  and  $\sigma_i$  is its uncertainty.

The uncertainty (i.e. standard deviation) in  $u_{L3}$  is given by

$$\sigma_{L3} = \sqrt{\frac{1}{\sum_{i \in \mathcal{S}} \sigma_i^{-2}}} \quad (3)$$

### 3.4. Output Data Product Description

$u_{L3}$  The minimum variance estimate of the mean wind speed averaged over the time and space intervals defined by eqn. (1) for a particular bin, as given by eqn. (2) (units of meters/second)

$\sigma_{L3}$  The standard deviation of  $u_{L3}$  for a particular bin, as given by eqn. (3) (units of meters/second)

$S$  Number of samples used to calculate  $u_{L3}$ .

### 3.5. Algorithm Configuration Parameter Values

The principle configuration parameters for this algorithm are the latitude, longitude and time boundaries of the bins. The bins are uniformly spaced every  $0.2^\circ$  in latitude from  $-40^\circ$  N to  $+40^\circ$  N, every  $0.2^\circ$  in longitude from 0 to  $360^\circ$  E and every 1 hour in time. Specifically:

$\text{Lat}_{\min} = -40^\circ, -39.8^\circ, \dots, +39.8^\circ$  North latitude

$\text{Lat}_{\max} = -39.8^\circ, -39.6^\circ, \dots, +40^\circ$  North latitude

$\text{Lon}_{\min} = 0^\circ, 0.2^\circ, \dots, 359.8^\circ$  East longitude

$\text{Lon}_{\max} = 0.2^\circ, 0.4^\circ, \dots, 360.0^\circ$  East longitude

$T_{\min} = (\text{year}, \text{day-of-year}, 0 \text{ hr UT}), (\text{yr}, \text{DOY}, 1 \text{ hr UT}), \dots, (\text{yr}, \text{DOY}, 23 \text{ hr UT})$

$T_{\max} = (\text{year}, \text{day-of-year}, 1 \text{ hr UT}), (\text{yr}, \text{DOY}, 2 \text{ hr UT}), \dots, (\text{yr}, \text{DOY}, 24 \text{ hr UT})$



#### 4. References

Pascual, D., Clarizia, M. P., Zavorotny, V., McKague, D., Ruf, C., “Algorithm Theoretical Basis Document Level 2 Wind Speed Retrieval,” CYGNSS Project Document, SPRL 148-0138, Rev 8, Chg 0, 20 Nov. 2023.

Gleason, S., Al-Khaldi, M., McKague, D., “Algorithm Theoretical Basis Document Level 1B DDM Calibration,” CYGNSS Project Document, SPRL 148-0137, Rev 5, Chg 0, 2 Nov. 2023.

Ruf, C., R. Atlas, P. Chang, M. Clarizia, J. Garrison, S. Gleason, S. Katzberg, Z. Jelenak, J. Johnson, S. Majumdar, A. O’Brien, D. Posselt, A. Ridley, R. Rose, V. Zavorotny, “New Ocean Winds Satellite Mission to Probe Hurricanes and Tropical Convection,” Bull. Amer. Meteor. Soc., doi:10.1175/BAMS-D-14-00218.1, 2016.

Ruf, C., M. Unwin, J. Dickinson, R. Rose, D. Rose, M. Vincent and A. Lyons, “CYGNSS: Enabling the Future of Hurricane Prediction,” IEEE Geosci. Remote Sens. Mag., 1(2), 52-67, doi: 10.1109/MGRS.2013.2260911, 2013.



**Appendix. Data Dictionary**

| Name       | Long Name                                       | Comment   |
|------------|---|---|
| time       | Time  | Timestamp coordinate at the center of the 1 hr bin, at 1 hour resolution. Range is one UTC day.   |
| epoch_time | Time Centering of Data Based on Epoch Reference | Timestamp coordinate is at the center of the 1 hr bin, at 1 hour resolution referenced by the historical Epoch reference date/time. The Epoch reference date/time corresponds to the first observation time window in the CYGNSS historical data record. Total number of timestamps in a file corresponds to one UTC day. This value is rounded to the nearest hour since leap seconds may have occurred making the number of hours since the start of the mission not exact. |
| lat        | Latitude  | Latitude coordinate at the center of the 0.2 degree bin, degrees_north, at 0.2 degree resolution. Range is -39.9 .. 39.9.   |
| lon        | Longitude                                       | Longitude coordinate at the center of the 0.2 degree bin, degrees_east, at 0.2 degree resolution. Range is 0.1 .. 359.9.  |
| wind_speed | Wind speed                                      | Minimum variance estimate of the mean wind speed in the bin over the spatial and temporal intervals specified by the bin's boundaries. This is done using an inverse-variance weighted average of all L2 samples of the wind speed that were made within the bin.   |



## ATBD Level 3 Gridded Wind Speed

UM: 148-0319

SwRI: N/A

Rev 3

Page 9

|                        |                          |   |
|------------------------|--------------------------|---|
| fds_rcg                | FDS range corrected gain | Minimum variance estimate of the mean RCG in the bin over the spatial and temporal intervals specified by the bin's boundaries. This is done using the same samples that are used in the calculation of wind_speed. The averaging is performed with the inverse-variance that were made within the bin. |
| wind_speed_uncertainty | Wind speed uncertainty   | Standard deviation of the error in the mean of all L2 samples of the wind speed within the bin.   |



|                               |                                     |  |
|-------------------------------|-------------------------------------|--|
| num_wind_speed_samples        | Number of wind speed samples        | The number of L2 wind speed samples used to calculate wind_speed.  |
| mean_square_slope             | Mean square slope                   | Minimum variance estimate of the mean MSS in the bin over the spatial and temporal intervals specified by the bin's boundaries. This is done using an inverse-variance weighted average of all L2 samples of the MSS that were made within the bin.  |
| mean_square_slope_rcg         | MSS range corrected gain            | Minimum variance estimate of the mean RCG in the bin over the spatial and temporal intervals specified by the bin's boundaries. This is done using the same samples that are used in the calculation of mean_square_slope. The averaging is performed with the inverse-variance that were made within the bin. |
| mean_square_slope_uncertainty | Mean square slope uncertainty       | Standard deviation of the error in the mean of all L2 samples of the MSS within the bin.   |
| num_mss_samples               | Number of mean square slope samples | The number of L2 MSS samples used to calculate mean_square_slope.  |